

BROADLEAF
JANUARY 2017
NEWSLETTER FOR WHOLESALE DISTRIBUTORS



WAGYU BEEF TENDERLOIN, BMS 4 | ITEM 51544

*SUGGESTED SERVING



DELICIOUS AND MEMORABLE.

DESTINCTIVE AND SUBTLE.

REFINED AND ELEGANT.

-NEW ZEALAND VENISON.



*SUGGESTED SERVING

PAMU VENISON STRIPLOIN | ITEM 44102

Newsletter for Wholesale Distributors January 1st - 31st, 2017



Index:	Page #
Grass Fed Beef; Australian Brunette Downs	2
Wagyu Beef; Darling Downs	3
Wagyu Beef; Darling Downs, Tomahawk Chops	4
Wagyu Beef; Portion Control, Grind Products & Deli Items	5
Bison	6
Wild Boar; Texas	7
Kurobuta, Sakura, and Iberico Pork, Suckling/Roasting Pigs	8
Bacon, Porchetta, Veal Bones, Lamb (NZ, AUS & Farm Raised)	9
Poultry	10
Poultry	11
Ostrich, Rabbit, Kangaroo, Alligator, Camel, Turtle, Frog Legs	12
Sausages	13
Hot Dogs, Sausages, Smoked Products, Trimmings	14
Salami, Truffles, Pates, Mousses, Foie Gras, Goat	15
Broadleaf Cervena Venison from Pamu Farms	16
Venison; Farm Raised New Zealand	17
Elk; Farm Raised New Zealand	18
Broadleaf Retail Items Page	19
Dot Exclusive Stocked Broadleaf Items	20

Key:

- **Red text** denotes price change
- **Blue prices** denote cases can be broken & sold by each
- **Green prices** denote cases cannot be broken

A/L = Airline (wing drummette attached)

B/O = Boneless

S/B/O = Semi Boneless

B/I = Bone In

TTS = Trim To Silver

DND = Denuded

BRN = Boneless, Rolled & Netted

H/O = Head On

H/Off = Head Off

HOFO = Head On, Foot On

IVP = Individually Vacuum Packed

S/On = Skin On

S/Off = Skin Off

C/C = Center Cut

MKT = Market Price

B/L = Broadleaf

G/N = Greg Norman

C/R = Chateau Royal

NCS = North Country Smokehouse

G/F = Grimaud Farms

M/P = MacFarlene Pheasants

J/F = Joyce Farms

TXQ = Texas Quail

S/P = Squab Producers

P/P/P = Palmetto Pigeon Plant

NEC = New England Charcuterie

A/S = Angel's Salumi

In observance of the New Year, Broadleaf will be closed Monday January 2nd. There will be no air freights shipping over the holiday weekend. We will resume our normal schedule on Tuesday, January 3rd.

Valentine's Day is just around the corner! Make sure your customers are well stocked on Wagyu tenderloins, located on page 3.

And make sure you're ready for post season football with some wild boar back ribs and St. Louis ribs on page 7.

Returned Product is Subject to a 15% Restocking Fee and all Broken Cases Subject to \$.25/lb. or Piece Case Break Charge

Hours of Operation: 6AM – 4:30PM Monday – Friday

www.broadleafgame.com

Code	Item	FZN	CHD	FZN	CHD
------	------	-----	-----	-----	-----

BRUNETTE DOWNS GRASS FED BEEF

20101	Tenderloin, 190 6 pc, 26# avg.		\$11.95	\$11.95
20111	Striploin 3 pc, 27# avg.	Featured Item	\$3.95	\$5.00
20121	Rib Eye Lip Off 4pc, 30# avg.		\$8.50	\$8.50
20231	Short Ribs B/O 20pc, 22# avg.		\$9.25	\$9.25
20141	Coulette 8 pk, SPECIFY WEIGHT	Featured Item	\$3.80	\$5.25
20131	Top Sirloin Cap Off 6 pc, 40# avg.		\$3.95	\$4.95
20251	Tri Tip 16 pc, 27# avg.		\$4.75	\$4.75
20260	Sirloin Flap Meat 16 pc, 43# avg.			\$6.50
20261	Flank Steaks 20 pc, 27# avg.		\$5.75	\$5.75
20205	Outside Skirt, 12# avg		\$5.25	\$5.25
20204	Inside Skirts, Peeled 20 pc, 45# avg.		\$4.85	\$4.85
20151	Top Round Cap Off 4 pc, 40# avg.	Featured Item	\$2.70	\$4.10
20171	Chuck Eye Roll 3 pc, 33# avg.	Featured Item	\$2.70	\$3.60
20281	Top Blade, Flat Iron 8 pc, 30# avg.		\$3.95	\$3.95
20191	Eye of Round 10 pc, 51# avg.		\$2.80	\$2.80
20172	Chuck Tail Flap 20 pc, 27# avg.		\$4.85	\$4.85
20241	Sirloin Tip, 41# avg.		\$2.85	\$3.15
20270	Brisket Five-Rib, B/O 4 pc/cse, 36# avg cse		\$2.50	\$2.95
20161	Bottom Round (Flats), 36# avg.	Featured Item	\$2.50	\$2.75
20211	Chuck Tenders 12 pc, 31# avg.		\$3.20	\$3.25
20181	Shoulder Clod 4 pc, 32# avg.		\$2.95	\$2.95
20170	Chuck Rib Square Cut, B/O, 27# avg.		\$5.25	\$5.25
20207	Tongue, 12# avg.		\$5.25	
20206	Cheek Meat, 25# avg			\$5.25
22399	Femur Bones, 30# avg.		\$1.45	

**BRUNETTE DOWNS GRASS FED, GRASS FINISHED,
NEVER EVER NEW YORK STRIPLOIN.**

No Hormones, No Antibiotics. Ever.



NO HORMONES. NO ANTIBIOTICS. EVER.
TREAT YOUR CUSTOMERS TO THE TASTE OF BEEF
RAISED AS NATURE INTENDED.
BRUNETTE DOWNS.
Brunette Downs Grass Fed, Grass Finished New York Striploin | Item 20111

BRUNETTE DOWNS GRASS FED BEEF - PORTIONED PRODUCTS

20523	Rib eye stk 10oz, 12 pc		\$13.25	
20513	NY Strip 10 oz, 8# avg case	Great Price!	\$8.95	
20514	NY Strip 12 oz, 8# avg case	Great Price!	\$8.95	
20518	NY Strip Filet 8 oz, 7# avg cse	Great Price!	\$8.95	
57263	Brisket Pastrami, 1 pc cse, 10# avg		\$7.45	\$7.45

BRUNETTE DOWNS GRASS FED BEEF - PATTIES & GRINDS

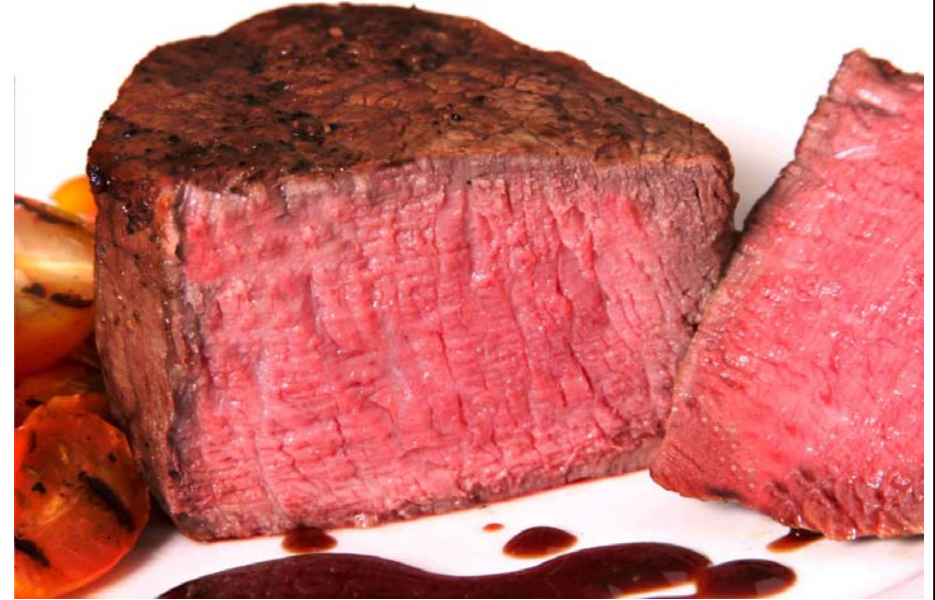
20142	Ground, 4/2½#		\$3.29	
20100	Ground, RETL, 10/1#		\$4.00	
20143	Patties 2-1 Round, 10#		\$3.29	
20144	Patties 3-1 Round, 10#		\$3.29	
20145	Patties 4-1 Round, 10#		\$3.29	

CAPE GRIM GRASS FED BEEF

22133	Oven Prepared Long Bone Export Racks, 27# avg	\$10.95	\$10.95
22101	Tenderloin, 190 7 pc, 35# avg	\$17.50	\$17.50
22111	Striploin, 4 pc, 40# avg	\$10.25	\$10.25
22121	Ribeye, 5 pc, 34# avg	\$11.95	\$11.95
22152	Hanging Tenders, 32# avg		\$7.20
22172	Chuck Tail Flap, 34# avg	\$7.75	\$7.75
22141	Coulotte, 43# avg	\$7.25	\$7.25
22231	Short Ribs, B/O, 38# avg	\$6.45	
22031	Top Sirloin, 43# avg.	\$6.50	\$7.00
20530	Cape Grim Rib Eye B/I Tomahawk approx 26-28oz, 2/2pk, 7-8# avg.	\$14.95	\$14.95
20531	Cape Grim Rib eye B/I Tomahawk approx 28-30oz, 2/2pk, 7-8# avg.	\$13.95	\$13.95

Code	Item	FZN	CHD	Code	Item	FZN	CHD
DARLING DOWNS WAGYU BEEF							
51534	Tenderloin (3), 190, 5 pc, 32# avg.	Featured Item	\$16.95			\$22.95	
51544	Tenderloin (4), 190, 5 pc, 32# avg.	Featured Item	\$19.95			\$23.95	
551550	Tenderloin (5), 190, 5 pc, 30# avg.		\$31.50			\$31.50	
551570	Tenderloin (7), 190, 5 pc, 32# avg.					\$37.70	
551599	Tenderloin (9), 190, 5 pc, 30# avg.		\$40.00			\$49.95	
51433	Strip Loin (3), B/O 1 Rib, 3 pc, 40# avg.		\$12.20			\$13.50	
51434	Strip Loin (4), B/O 1 Rib, 3 pc, 40# avg.		\$14.75			\$14.75	
551461	Strip Loin (5), B/O 1 rib, 3 pc, 40# avg.					\$20.25	
551446	Strip Loin (6), B/O 1 rib, 3 pc, 40# avg.					\$23.50	
551447	Strip Loin (7), B/O 1 rib, 3 pc, 40# avg.					\$27.90	
551448	Strip Loin (8), B/O 1 rib, 3 pc, 40# avg.					\$37.50	
51634	Shortloin B/I (3), 2 pc, 49# avg.					\$13.90	
552443	Rib eye (3), B/O 7 rib, lip off, 3 pc, 38# avg.					\$14.25	
552441	Rib eye (4), B/O 7 rib, lip off, 3 pc, 38# avg.					\$17.25	
552435	Rib eye (5), B/O 7 Rib lip off, 3 pc, 38# avg.					\$25.90	
552446	Rib eye (6), B/O 7 Rib lip off, 3 pc, 38# avg.					\$27.90	
552447	Rib eye (7), B/O 7 Rib lip off, 3 pc, 38# avg.					\$32.25	
552448	Rib eye (8), B/O 7 Rib lip off, 3 pc, 38# avg.					\$45.25	
51734	Butt Tenders (3), 27# avg.					\$14.50	
54634	Short Ribs B/O (3), 40# avg.	\$12.95				\$13.95	
51952	Outside Skirts (3) Peeled, 33# avg.					\$13.95	
52134	Flank Steaks (3), 44#, avg.	\$9.00				\$9.45	
56434	Chuck Ribs B/O (3), 30#, avg.	\$10.45				\$10.95	
52635	Chuck Tail Flap (3), 41# avg.					\$14.95	
51852	Hanging Tenders (3), 40# avg.	\$10.25				\$10.95	
58653	Cheek Meat (3), 32# avg.	\$8.95				\$9.50	
53235	Top Blade, Flat Iron (3), 43# avg.	\$8.50				\$8.50	
50934	Coulotte (3), 184D, 33# avg. 8 pc cse	\$8.95				\$9.95	
550969	Coulotte (7), 184D, 34# avg. 8 pc cse					\$14.45	
51334	Tri Tips (3), 49# avg.					\$9.25	
52034	Sirloin Flap Meat (3), 52# avg.	\$8.95				\$9.95	
52037	Inside Skirts (3) Peeled, 37# avg.					\$7.95	
51134	Top Sirloin (3), Cap Off, 184B, 6 pc, 39# avg.	\$6.00				\$6.50	
551169	Top Sirloin (7), Cap Off 184B, 6 pc, 40# avg.					\$10.25	
52634	Chuck Eye Roll (3), 46# avg.					\$4.95	
56995	Beef Back Ribs, 33# avg.	\$4.25				\$4.25	
50434	Eye of Round (3), 55# avg.	\$3.50				\$3.80	

THE SECRET TO DARLING DOWNS WAGYU BEEF'S
LEGENDARY FLAVOR IS DIET, SUPERIOR GENETICS,
AND AMPLE INTRAMUSCULAR MARBLING.



*suggested serving

OUR WAGYU SELECTIONS START AT BEEF MARBLE SCORE 3
(BMS 3) AND GO ALL THE WAY UP TO BEEF MARBLE SCORE 10.
YOUR CUSTOMERS DESERVE THE FINEST. THIS IS IT.



Darling Downs Wagyu™

Darling Downs Whole Muscle Wagyu Beef Tenderloin, BMS 4 | Item 51544

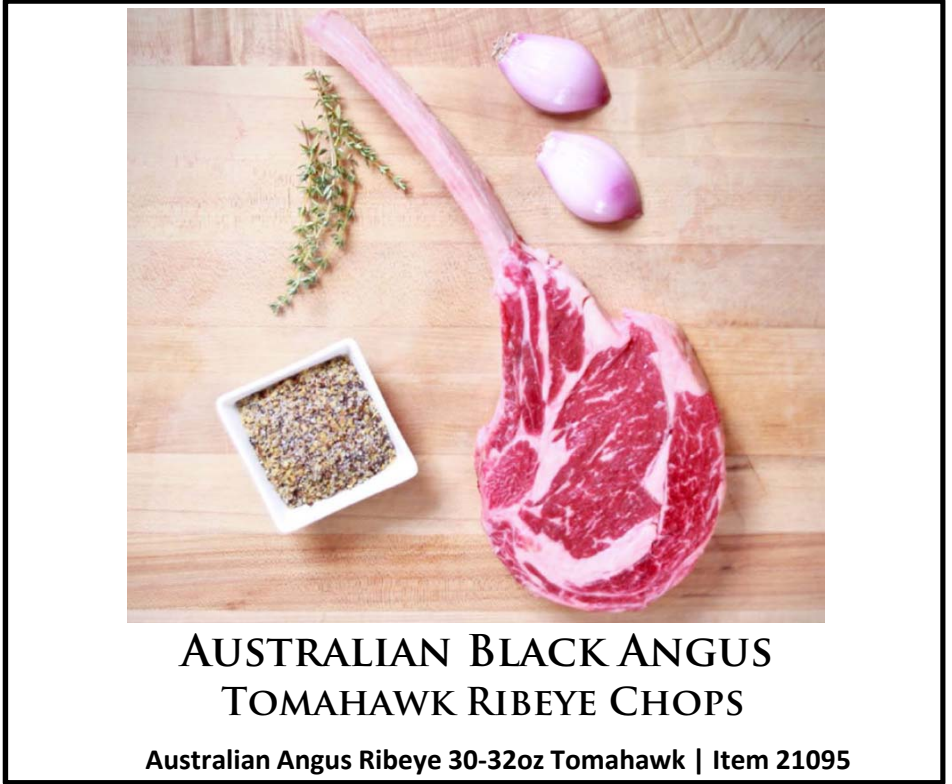
Code	Item	FZN	CHD
DARLING DOWNS WAGYU BEEF (CONTINUED)			
50034	Top Round Cap Off (3), 3/15# avg.		\$5.10
53534	Brisket 5 Rib Deckle Off (3), 39# avg.		\$4.50
53364	Brisket Flat (3), 26# avg.		\$6.40
53360	Brisket Point (3), 30# avg.		\$4.25
53234	Shoulder Clod (3), 49# avg.	\$3.20	\$3.75
50734	Peeled Knuckle (3), 53# avg.	\$3.50	\$4.05
53134	Chuck Tender (3), 52# avg.	\$3.25	\$3.80
50534	Bottom Flat (3), 40# avg.	\$3.50	\$4.00
51752	Tails (3), 15#		\$4.95

Code	Item	FZN	CHD
JAPANESE WAGYU BEEF			
99970	Tenderloin A5 (8-10), 2/9#		\$71.25
99971	Tenderloin A5+ (10-12), 2/9#		\$73.75
99999	Strip Loin A5 (8-10), 2/13#		\$67.50
99998	Striploin A5+ (10-12), 2/13#		\$71.25
99948	Rib eye A5 (8-10), 2/13#		\$67.50
99949	Rib eye A5+ (10-12), 2/13#		\$71.25

Code	Item	FZN	CHD
WAGYU BEEF - PATTIES & GRINDS			
58970	Patties 10oz Round, 10#	\$3.65	
58992	Patties 2-1 Round, 10#	\$3.65	
58962	Patties 6oz Round, 11.25#	\$3.65	
58993	Patties 3-1 Round, 10#	\$3.65	
58994	Patties 4-1 Round, 10#	\$3.65	
58902	Patties 8-1 Round, bulk pack, 10#	\$4.30	
58999	Ground, 4/2½#	\$3.65	
58998	Ground, 10/1#	\$3.75	

Code	Item	FZN	CHD
BROADLEAF WAGYU MEATBALLS			
58799	B/L Wagyu Beef Italian Meat balls (cooked), 2oz, 2x5#	\$4.65	

Code	Item	FZN	CHD
BROADLEAF WAGYU DELI ITEMS			
57260	B/L Pastrami, 1 pc	\$7.45	
57350	B/L Raw Corned Brisket, 6 pc	\$4.95	\$4.95
57353	B/L Raw Corned Eye Round, 4/6.5# Avg.	\$4.75	\$4.75
57200	B/L Cooked Bottom Round, 2/5#	\$5.95	\$5.95



**AUSTRALIAN BLACK ANGUS
TOMAHAWK RIBEYE CHOPS**

Australian Angus Ribeye 30-32oz Tomahawk | Item 21095

Code	Item	FZN	CHD
RIBEYE TOMAHAWK CHOPS			
56032	Wagyu Rib eye B/I Tomahawk stk (3+) approx 36-40oz, 2/2pk, 9-11#	\$19.75	\$19.75
58900	Wagyu Rib eye B/I Tomahawk stk (3+) approx 30-32oz, 2/2pk, 8-10#	\$19.75	\$19.75
58901	Wagyu Rib eye B/I Tomahawk stk (3+) approx 26-28oz, 2/2pk, 7-8#	\$19.75	\$19.75
21094	Australian Angus Rib eye B/I Tomahawk stk approx 28-30oz, 2/2pk, 7-8#	\$14.45	\$14.45
21095	Australian Angus Rib eye B/I Tomahawk stk approx 30-32oz, 2/2pk, 7-8#	\$13.95	\$13.95
20400	Australian Angus Rib eye Tomahawk Rack 29# avg.	\$11.95	
20530	Cape Grim Grass Fed Rib eye B/I Tomahawk approx 26-28oz, 2/2pk, 7-8#	\$14.95	\$14.95
20531	Cape Grim Rib eye B/I Tomahawk approx 28-30oz, 2/2pk, 7-8# avg.	\$13.95	\$13.95

All Prices Listed are FOB Los Angeles and are Subject to Change at Any Time

Code	Item	FZN	CHD
WAGYU BEEF - PORTIONED PRODUCTS			
58971	Tenderloin stk (3) 8oz, 12 pc	\$45.95	
57875	Tenderloin stk (5) 8oz, 12 pc	\$53.95	
56032	Rib eye B/I Tomahawk stk (3+) approx 36-40oz, 2/2pk, 9-11#	\$19.75	\$19.75
58900	Rib eye B/I Tomahawk stk (3+) approx 30-32oz, 2/2pk, 8-10#	\$19.75	\$19.75
58901	Rib eye B/I Tomahawk stk (3+) approx 26-28oz, 2/2pk, 7-8#	\$19.75	\$19.75
50603	Rib eye stk (3+) 1 inch thick, 10#	\$16.95	
57934	Rib eye Sandwich stk (3+), 10#	\$8.95	
51127	Coulotte "Sushi" Log (3+) 12-14oz, 6 pc	\$18.80	
58903	Coulotte "Baseball" stk (3+) 8-9oz, 10#	\$18.80	
58913	Coulotte stk (3+) 8-9oz, 10#	\$16.40	
51117	Top Sirloin Filet Log (3+) 8pc, 10#	\$15.50	
58919	Top Sirloin C/C stk (3+) 8oz, IVP, 10#	\$15.50	
58923	Top Sirloin stk (3+) 4oz, IVP, 10#	\$15.50	
57867	Top Sirloin C/C stk (7) 8oz, 15 pc	\$18.95	
51454	NY Strip Filet C/C stk (3) 8oz, 12 pc	\$21.80	
57802	NY Strip Filet C/C stk (5) 8oz, 12 pc	\$32.95	
58986	NY Strip C/C stk (3) 10oz, 12 pc	\$20.80	
58988	NY Strip C/C stk (3) 12oz, 12 pc	\$20.80	
57800	NY Strip stk C/C (5) 8oz, 12 pc	\$30.95	
57810	NY Strip stk C/C (5) 10oz, 12 pc	\$30.95	
57820	NY Strip stk C/C (5) 12oz, 12 pc	\$30.95	
58896	Porterhouse stk (3) 24oz, 6 pc	\$18.45	
58866	T-Bone stk (3) 16oz, 10 pc	\$15.95	
50625	Bone In NY Strip C/C stk (3) 17-18oz, 8 pc	\$18.95	
58927	Flat Iron stk (3), 8oz, 10#	\$19.95	
58934	NY Strip sandwich stk (3+), 10#	\$11.95	
58889	NY Strip vein end roast (3+), 10#	\$10.95	
58938	Kabob Meat (Diced), 10#	\$5.95	
58940	Stew Meat (Diced), 10#	\$4.40	

WAGYU BEEF BRESAOLA (CURED)	
57256	B/L Sliced, 4oz - Retail price per pack
57255	B/L Slab, 10# case

WAGYU BEEF TENDERLOIN FILET STEAKS



YOUR CUSTOMERS KNOW THAT RUNNING A RESTAURANT CAN BE AN ALL ENCOMPASSING AFFAIR. GIVE THEM A HELPING HAND WITH OUR PORTIONED WAGYU BEEF SO THEY CAN FOCUS ON THEIR DINERS NOT THEIR PLATE COSTS.

8oz Wagyu Beef Tenderloin Filet Steaks, BMS 3 | Item 58971

GREG NORMAN SIGNATURE - PORTIONED PRODUCTS			
55636	Patties 10oz Round, 10#		\$3.69
55637	Patties 2-1 Round, 10#		\$3.69
55639	Patties 8-1 Round, bulk pack, 10#		\$4.30
55638	Ground, 4/2½#		\$3.69
58969	Hot Dog (skinless) 6 inch 4-1, 2/5#		\$3.95
GREG NORMAN SIGNATURE - RETAIL PRODUCTS			
55563	Patties 3-1 Round, 12/4pc (21.2oz) pk		\$76.56
55568	Patties 8-1 Round, 12/12pc (24oz) pk		\$86.76
55564	Hot Dog (skinless) 4-1, 12/4pc (16oz) pk		\$58.44
\$14.00 RANGERS VALLEY WAGYU BEEF			
51504	Tenderloin, BMS 4, 5 pce cse, 29# avg	\$25.65	\$25.65
51508	Striploin, BMS 4, 2 pce cse, 25# avg	\$16.00	\$16.00

Code	Item	FZN	CHD	Code	Item	FZN	CHD
------	------	-----	-----	------	------	-----	-----

BISON			
24270	Tenderloin 189A, 4/5# up, 23# avg. (USDA)	\$26.55	\$26.55
24066	Bison Tenderloin 189A, 3/5# up, 17# avg.	\$22.85	\$23.45
24245	Rib Eye, 2 pc cse (USDA), 20# avg.	\$17.05	\$17.05
24047	Bison Rib-Eye, 2 pc cse 20# avg.	\$16.90	\$16.90
24212	Export Ribs, 3/11# avg. (USDA)	\$13.60	
24053	Shortloin B/In, SPECIFY WEIGHT	\$13.75	
24031	NY Strip Loin, 2 pc cse, 18# avg.	\$13.15	\$13.15
24233	NY Strip Loin, 2 pc, 22# avg. (USDA)	\$16.10	\$16.10
24170	Top Sirloin, SPECIFY WEIGHT	\$10.80	
24067	Hanging Tenders, SPECIFY WEIGHT	\$11.35	
24276	Tri Tips (USDA), SPECIFY WEIGHT	\$9.55	
24019	Flank Steaks, SPECIFY WEIGHT	\$11.70	
24254	Short Ribs, B/I, 4/2pk, 29# avg. (USDA)	\$5.80	
24056	Skirt Steaks, SPECIFY WEIGHT	\$9.70	
24263	Top Rounds, 4/17# avg. (USDA)	\$9.25	
24055	Sirloin Tips, SPECIFY WEIGHT	\$10.40	
24202	Bottom Flats, 4/13# avg. (USDA)	\$8.75	
24057	Steamship Rounds, 1/55# avg.	\$10.65	
24210	Shoulder Clods, SPECIFY WEIGHT (USDA)	\$9.10	
24204	Briskets, SPECIFY WEIGHT (USDA)	\$8.95	
24209	Chuck, SPECIFY WEIGHT (USDA)	\$9.10	
24292	Back Ribs, 40# avg.	\$3.90	
24148	Tomahawk Rib Chop 20-28oz/16pc IVP	\$14.00	
24049	Rib Eye Stks 10oz, 10#	\$20.95	
24050	Rib Eye Stks 12oz, 10#	\$20.95	
24046	Porterhouse Stks 16oz, 10#	\$14.80	
24062	T-Bone Stks 16oz, 10#	\$14.80	
24030	NY Strip Stks 8oz, 10#	\$18.80	
24028	NY Strip Stks 10oz, 10#	\$18.80	
24029	NY Strip Stks 12oz, 10#	\$18.80	
24071	Top Sirloin Stks 8oz, 10#	\$17.55	
24072	Top Sirloin Stks 10oz, 10#	\$17.55	
24073	Top Sirloin Stks 12oz, 10#	\$17.55	
24032	Osso Bucco 1 inch, 10/1#	\$9.60	
24059	Stew Meat (Diced), 2/5#	\$8.80	
24058	Stew Meat (Diced), 10/1#	\$9.00	

RETAIL BISON PRODUCTS			
24081	Jerky Black Pepper, 2oz	\$3.75	
24083	Jerky Black Pepper, 4oz	\$7.40	



BISON		
24025	Ground, 4/2½#	\$8.30
24016	Ground, 10x1#	\$8.55
24034	Patties 2-1 Round, 10#	\$8.30
24037	Patties 3-1 Round, 10#	\$8.30
24039	Patties 4-1 Round, 10#	\$8.30
24042	Patties 8-1 Round, 10#	\$8.30
24026	w/Beef Ground 4/2½#	\$7.50
24134	w/Beef Patties 2-1 Round, 10#	\$7.50
24043	w/Beef Patties 3-1 Round, 10#	\$7.50
24136	w/Beef Patties 4-1 Round, 10#	\$7.50
24040	w/Beef Patties 8-1 Round, 10#	\$7.50

RETAIL BISON PRODUCTS		
24082	Rib Eye Stks Boxed, 6/2x5oz	\$99.00
24080	NY Strip Stks Boxed, 6/2x7oz	\$102.00
24077	Top Sirloin Stks Boxed, 6/2x8oz	\$114.00
24090	Tri-Tips, 10#	\$10.35
24000	Bison Ground, 10/1#	\$8.85
24085	Patties 4-1 Round Boxed, 6/4x4oz	\$9.05
24079	Hot Dogs 6 inch 5-1, 6/8pk	\$41.10

All Prices Listed are FOB Los Angeles and are Subject to Change at Any Time

Phone: 800-336-3844 Fax: 323-826-9830

Code	Item	FZN	CHD	Code	Item	FZN	CHD
------	------	-----	-----	------	------	-----	-----

WILD BOAR

31022 Tenderloins, 10-15# avg.	Featured Item	\$9.95
31021 B/O Loins TTS, 1.5# up, 40# avg.		\$7.95
31998 Frenched 10 Rib Rack 3-4# avg., 2/2pk		\$9.45
31999 Frenched 10 Rib Rack 2-3# avg., 2/2pk		\$9.45
31013 Frenched 10 Rib Rack 1-2# avg., 4/2pk		\$8.95
31051 Saddle B/I, 29# avg.		\$5.15
31054 Loin NY Strip B/O, 22# avg.		\$6.95
31004 Shoulder BRN, 20# avg.	Featured Item	\$4.75
31010 Wild Boar Leg, BRN, 19# avg.		\$5.30
31009 Leg B/I, 47# avg.		\$4.35
31111 Leg B/I Steamship, 45# avg.		\$4.30
31002 Bellies, 42# avg.		\$3.60
31132 Neck Meat B/O, 20-50# (call to verify)		\$4.35
31015 Shanks B/I, 37# avg.		\$2.55
31112 Shanks B/O, 44# avg.		\$3.45
31101 Baby Back Ribs, 19# avg.		\$2.75
31220 St. Louis Ribs, 17# avg.		\$2.75
31023 Wild Boar Trim, 42# avg.		\$3.45
31003 Bones, 27# Avg.		\$0.95

WILD BOAR - PORTIONED PRODUCTS & GRINDS

31044 Loin Medallions 4oz, 10#	\$9.95
31045 Loin Medallions 6oz, 10#	\$9.95
31046 Loin Medallions 8oz, 10#	\$9.95
31011 Leg Medallions 4oz, 10#	\$8.75
31005 Loin Chops B/I 4-6oz	\$7.95
31006 Loin Chops B/I 6-8oz	\$7.95
31007 Loin Chops B/I 8-10oz	\$7.95
31019 Stew Meat (Diced), 2/5#	\$5.60
31008 Ground, 4/2.5#	\$4.65
31108 Ground, 10/1#	\$4.75
31039 Patties 2-1 Round, 10#	\$4.65
31012 Osso Bucco 2 inch, 10#	\$5.80

NUTTY AND RICH, DISTINCT YET FAMILIAR. CATER TO YOUR CUSTOMERS ADVENTUROUS SIDE WITHOUT GOING TOO FAR OFF THE BEATEN PATH WITH OUR TEXAS WILD BOAR.



SOUTHERN WILD BOAR

Wild Boar Tenderloin | Item 31022

WHOLE WILD BOAR, HEAD OFF

Please allow for one week lead time while in season

31302 Whole Boar, H/Off, 20-29#	\$4.25
31303 Whole Boar, H/Off, 30-39#	\$4.25
31304 Whole Boar, H/Off, 40-49#	\$4.25
31305 Whole Boar, H/Off, 50-59#	\$4.25

WILD BOAR - FOR ROASTING

31048 Whole, Head On, Skin On, Feet On *SPECIFY SIZE*	\$4.25
--	--------

Code	Item	FZN	CHD
CERTIFIED BERKSHIRE PORK (AKA KUROBUTA)			
33522	Tenderloin 415, 5/2 pc, 11# avg. (BerkrIDGE)		\$7.50
33222	Tenderloin 415, 5/2 pc, 12# avg. (Heritage)	\$6.20	\$6.20
33203	8 Bone Frenched Rack, 5/5-7#	\$7.45	\$7.45
33004	8 Bone Rack, chine off, 35# avg	\$7.69	
33204	8 Bone Rack, cap on, chine off, 5/5.5-7# (Heritage)		\$6.80
33504	8 Bone Rack, cap on, chine off, 5/5.5-7# (BerkrIDGE)		\$6.40
33217	Loin C/C B/O, 35# avg.		\$6.45
33246	Loin NY Strip B/O, vein end off, 4/4# avg.	\$4.95	\$4.95
33216	Full Loin B/I 410, 2/20# avg.	\$4.65	\$4.65
33206	Loin Back Rib, 15# avg. (Heritage)	\$6.95	
33205	Bellies B/O S/Off 1 Rib, 4/9# (Heritage)		\$5.55
33505	Bellies B/O S/Off 1 Rib, 5/9# (BerkrIDGE)	\$5.15	\$5.15
33524	Cheek Meat, 10# avg.	\$3.90	
33508	Boston Butt B/O, 50# avg. (BerkrIDGE)		\$3.70
33208	Boston Butt B/O, 42# avg. (Heritage)		\$3.95
33507	Boston Butt B/I 406, 45# avg. (BerkrIDGE)		\$3.30
33207	Boston Butt B/I 406, 50# avg. (Heritage)		\$3.70
33235	Ham B/I Leg Steamship Round, 2/15# avg.	\$2.00	
33238	Shoulder Ribs 34# avg.	\$3.05	
33213	Hind Shanks 22oz, 34# avg.	\$3.05	
33242	Loin C/C B/I Chops 12oz, 10#	\$7.70	
33221	Fore Shank Osso Bucco, 16-18oz, 30# avg.	\$2.45	
33212	Ground 4/5#	\$3.70	

SAKURA DUROC PORK

33308	Boneless Butt, 5 pc cse, 45# avg.	\$3.55
33304	8 Bone Rack C/Off, 5 pc cse, 41# avg.	\$5.90
33305	Pork Belly 1 Rib, 4 pc cse, 39# avg.	\$4.65
33317	Boneless C/C Loin, 50# avg.	\$5.55

SUCKLING / ROASTING PIGS *Fresh available, order Tuesday for Thursday* IBERICO PORK

35002	Whole Pig Head On, 1/15-19#	\$5.00	
35003	Whole Pig Head On, 1/20-29#	\$4.45	
35004	Whole Pig Head On, 1/30-39#	\$3.75	
35005	Whole Pig Head On, 1/40-49#	\$2.50	MKT
35006	Whole Pig Head On, 1/50-59#	\$2.40	MKT
35016	Whole Pig Head On, 1/60-69#	\$2.21	MKT
35007	Whole Pig Head On, 1/70-79#	\$2.03	MKT
35008	Whole Pig Head On, 1/80-89#	\$1.80	MKT

**CERTIFIED
BERKSHIRE
PORK
AKA KUROBUTA**



**Kurobuta Pork 8 bone rack (chine off)
Item 33504**

IBERICO PORK



**Iberico Pork Secreto
Item 33600**

33600	Secreto (shoulder blade), 22lb avg cse wght	\$11.95
33601	Pluma (flank), 22lb avg cse wght	\$13.45
33602	Presa (shoulder steak), 22lb avg cse wght	\$12.65
33603	Solomillo (tenderloin), 22lb avg cse wght	\$10.60
33604	Lomo (loin), 22lb avg cse wght	\$12.10
33605	Costilla (spare ribs), 16lb avg cse wght	\$4.70
33607	Pancetta (belly, skin on), 44lb avg cse wght	\$4.45
33608	Carre (rack of Iberico), 33lb avg cse wght	\$11.10

Code	Item	FZN	CHD	Code	Item	FZN	CHD
BACON				AUSTRALIAN / NZ / DOMESTIC LAMB			
30005	Nueske's Applewood Smkd Sliced 16-20ct, 30#		\$7.70		*For any specialty Australian, New Zealand or		
30006	Nueske's Applewood Smkd Slab, 5/9-11#		\$7.45		Domestic Lamb cuts please call us for pricing,		
30040	Nueske's Applewood Smkd Slab, 1/9-11#		\$7.45		availability and lead time.*		
30022	NCS Applewood Smkd Slab, 5x7#	\$5.95		NEW ZEALAND Now available chilled!			
30024	NCS Applewood Smkd Sliced 10/12, 4x5#	\$6.20		14560	NZ Loins B/O 6-8oz (TK)	\$11.95	\$12.50
30023	NCS Applewood Smkd Sliced 16/18, 4x5#	\$6.20		14561	NZ Loins B/O 8-10oz (TK)	\$11.95	\$12.50
30020	NCS Fruitwood Smoked Nitrate Free Sliced 16/18, 4x5#	\$7.00		14563	NZ Tender Loin (TK)	\$10.95	\$11.45
30021	NCS Bacon Ends and Pieces	\$3.35		14575	NZ 7-8 rib Frnchd 10-12oz Racks (TK) 14/2pk	\$7.75	\$8.25
31025	Wild Boar Slab, 2/5#	\$4.59		14576	NZ 7-8 rib Frnchd 12-14oz Racks (TK) 14/2pk	\$7.75	\$8.25
30016	Wild Boar Sliced (retail w/labels), 10/1#	\$5.99		14577	NZ 7-8 rib Frnchd 14-16oz Racks (TK) 12/2pk	\$7.75	\$8.25
30010	Kurobuta Slab, 40#	\$6.55		14578	NZ 7-8 rib Frnchd 16-18oz Racks (TK) 12/2pk	\$7.75	\$8.25
30011	Kurobuta Sliced, 15/1#	\$6.95		14579	NZ 7-8 rib Frnchd 18-20oz Racks (TK) 12/2pk	\$7.75	\$8.25
30051	Duck Bacon, 12-14, 5# avg cse	\$7.75		14580	NZ 7-8 rib Frnchd 20-22oz Racks (TK) 10/2pk	\$7.75	\$8.25
				14581	NZ 7-8 rib Frnchd 22-24oz Racks (TK) 10/2pk	\$7.60	\$8.10
				14582	NZ 7-8 rib Frnchd 24-26oz Racks (TK) 10/2pk	\$7.60	\$8.10
				14030	NZ Top Sirloin Cap Off (TK)	\$7.60	\$7.95
				14559	NZ Legs, B/O (TK), 43# Avg.	\$5.00	\$5.30
				14527	NZ Legs, EZ Carve, B/I (TK), 6/5#	\$3.60	\$3.85
				14557	NZ Hind Shanks (TK) 16-18oz, 24# Avg.	\$3.35	\$3.55
				14513	NZ Shoulder, B/I Shank Off (Oyster), 37# Avg.	\$3.35	\$3.55
				14558	NZ Fore Shanks (TK) 12oz+, 31# Avg.	\$3.25	\$3.45
				14037	NZ Lamb Stew Meat, 2x5#	\$6.60	

AUSTRALIAN LAMB RACKS, 28 OZ +

ITEM 15014



AUSTRALIAN

15004	Aust. Lamb Leg, B/O	\$4.79
15012	Aust. Lamb 7-8 rib Frnchd 24-26oz Racks	\$10.25
15013	Aust. Lamb 7-8 rib Frnchd 26-28oz Racks	\$10.25
15014	Aust. Lamb 7-8 rib Frnchd 28+oz Racks	\$7.75
15026	Aust. Lamb Top Sirloin	\$5.65

GROUND

16034	Ground Lamb, 4 x 2.5#	\$4.70
16014	Ground Lamb, 10 x 1#	\$4.80
16006	Patties 2-1 Round, 10#	\$4.70
16005	Patties 4-1 Round, 10#	\$4.70
16026	Patties 8-1 Round, bulk pack, 10#	\$4.90

VEAL / NZ

27004	Bobby Bones - Femur Cut, 44#	\$0.98
-------	------------------------------	--------

Creminelli Fine Meats

34032	Porchetta, 2/4# avg.	\$11.45
-------	----------------------	---------

In Season!

Code	Item	FZN	CHD
------	------	-----	-----

POULTRY

60003	Capon Whole, 6/6.5-9.5#	\$3.75	
62069	Jidori Chicken Whole, 12/2.5-3#		\$3.20
62074	Jidori Chicken A/L Brst, 8-10oz/24pc, 15# avg.		\$6.50
62022	Chicken F/R Mary's Nat. Whole, 10/3.5-4.5#	\$2.45	
62123	Chicken F/R Mary's Nat. A/L Brst, 40# avg.	\$5.70	
62122	Chicken F/R Mary's Nat. B/O, Brst S/Off 40# avg	\$6.00	
62049	Poulet Rouge 8/2-2.5#	\$3.35	
62024	Silkie Chicken Whole, 10/2-2.5#	\$77.50	
62145	Chicken Osso Bucco, 2/25pc, 10# (IQF) avg.	\$3.29	
63104	Cornish Game Hens S/B/O, 16/14-16oz	\$64.00	
63106	Cornish Game Hens S/B/O, 16/10-12oz	\$68.00	
64201	Pekin Duck Natural Whole, 6/5.0-5.5# (J/J)	\$2.65	
64211	Pekin Duck Brst Nat. B/O 16-18oz DBL 10 pc	\$9.85	
64044	Pekin Duck Legs 20# avg.	\$6.35	
64127	Pekin Duck Cooked 1/2's w/Sauce	\$105.45	
64001	Pekin Duck Bones, 30# avg.	\$0.88	
64007	M/L Pekin Duck Confit, 12 pc, 6/2pk	\$52.80	
64025	M/L Pekin Duck Brst B/O 6-7oz, 10# avg.	\$11.60	
64024	M/L Pekin Duck Brst B/O 7-8oz, 10# avg.	\$11.50	
64026	M/L Pekin Duck Brst B/O 8-10oz, 10# avg.	\$11.25	
64083	Moullard Duck Legs B/I, 50# avg.	\$7.40	
64121	Moullard Duck Brst B/O, 28-32oz	\$11.75	
64032	Muscovy Duck Hen, 8/4# avg.	\$4.40	\$5.85
64031	Muscovy Duck Hen Brst, 20/16oz	\$11.55	\$14.65
64030	Musc Duck Drake Brst S/On, 10/30oz	\$9.70	\$12.60
64035	Retail Muscovy Duck Drake Brst, 10 pc, 10# avg.	\$12.30	\$12.80
64056	Muscovy Drake Duck Wings, 40lb cse	\$2.00	
64029	Muscovy Duck Confit, 6x9pks	\$10.90	
64129	Muscovy Drummette Confit, 80pc, 4/20pk	\$6.95	
64036	Retail Muscovy Duck Hen Leg, 10# avg.	\$6.15	
64011	Duck Ground 4/2#	\$5.75	
64008	Rendered Duck Fat Large Pail, 7.5#		\$28.15
64009	Rendered Duck Fat Small Pail, 1.75#	\$7.45	
30051	Duck Bacon 12-14, 5lb avg cse	\$7.75	

GRIMAUD FARMS MUSCOVY DUCK

Muscovy Whole Hens, 8/4# | Item 64032 Retail Muscovy Hen Legs, | Item 64036
Muscovy Drake Breast, Skin on 10/30oz | Item 64030



Moullard duck breast double 28-32oz | Item 64121

Code	Item	FZN	CHD	Code	Item	FZN	CHD
------	------	-----	-----	------	------	-----	-----

POULTRY CONTINUED

94004	Geese Whole 5/8-10#		\$4.89		
94005	Geese Whole 4/10-12#		\$4.89		
94006	Geese Whole 4/12-14#		\$4.89		
95014	Guinea Hen, 8/3-3½# (G/F)		\$4.40		
95016	Guinea Hen A/L Brst, 6-8oz, 17# avg. (G/F)		\$12.25		
95017	Guinea Hen A/L Brst, 8-10oz, 20# avg. (G/F)		\$12.25		
95002	Guinea Hen Legs B/I, 6/12pk (G/F)		\$3.95		
66007	Partridge Chukar, HOFO, 20 pc, 15-19oz	\$243.95			
68213	Pheasant, 9/2½-3# (M/P)		\$5.35		
68214	Pheasant, 8/3-3½# (M/P)		\$5.30		
68215	Pheasant, 7/3.5-4# (M/P)		\$5.30		
68205	Pheasant Legs B/I, 18# avg. (M/P)		\$6.75		
68211	Pheasant Brst B/O S/On, 8-10oz, 12/4pk (M/P)		\$13.15		
68203	Pheasant A/L Brst, 6-8oz, 12/4pk (M/P)		\$12.10		
68204	Pheasant A/L Brst, 8-10oz, 12/4pk (M/P)		\$12.10		
68208	Pheasant Thighs B/O S/On, 5/5# (M/P)		\$7.95		
69027	Poussin, Whole 20/15-17oz (P/P/P)	\$85.00			
69026	Poussin, Whole 16/19-22oz	\$69.60			
69021	Poussin Poulet Rouge Whole, 12/16-20oz (J/F)	\$63.00			
69012	Poussin S/B/O, 6x2/13-15oz	\$61.50			
69011	Poussin S/B/O, 6x2/16-18oz	\$64.50			
61029	Quail Jumbo Whole, 5-6oz, 6/4pk (TXQ)	\$56.00			
61028	Quail Jumbo S/B/O, 4-5oz, 6/4pk (TXQ)	\$71.00			
61002	Quail Manchester S/B/O, 24pc, 6/4pk	\$75.10			
61003	Quail S/B/O, 9/4pk (Plantation)	\$72.00			
61008	Quail Whole, 9/4pk (Plantation)	\$54.00			
61013	Quail Brst B/O, Medallions, 4.25# avg, 9/6pk	\$60.75			
61105	Quail Eggs, 15pc tray	\$2.50			
90010	Squab Whole, 24/16oz (P/P/P)	\$219.12			
90029	Squab Whole, 12/13-15oz (S/P)	\$128.40			
90002	Squab S/B/O, 24/10-12oz	\$301.20			
90105	Squab B/O Brst, 24/2x3-4oz Dbl	\$205.80			
90004	Squab A/L Brst, 12/2x4-5oz Dbl	\$142.50			
90013	Squab Whole HOFO, 24/15-16oz	\$10.85			
91006	Tur-Duc-Hen Rolls, 4/4# (Big Easy)	\$110.60			
91005	Tur-Duc-Hen, 13# Jambalaya Stuffing (Big Easy)	\$54.45			



With a dedication to quality, our flavor, moisture, and tenderness shine through on our finished product.



Plantation Semi Boneless Quail, 9/4pk | Item 61003

Code	Item	FZN	Code	Item	FZN	CHD
OSTRICH			RABBIT			
65001	Fan Fillets, call for case weights	\$27.50	11203	Whole Domestic Fryers, 6/2½-3# (De Bruin)	\$6.70	\$6.70
65014	Tenderloin, call for case weights	\$27.50	11003	Whole Domestic Fryers, 6/2½-3# (Pel Freez)	\$6.70	\$6.90
65003	Inside Strips, call for case weights	\$27.50	11007	Whole Domestic Roasters, 6/4.5# (Pel Freez)	\$5.30	
65015	Top Loin, call for case weights	\$27.50	11009	Saddles B/O, 10# avg. (Pel Freez)	\$13.30	
65024	Outside Strip, call for case weights	\$27.50	11008	Saddles B/I, 15# avg. (Pel Freez)	\$9.25	
65027	Oyster Steak, call for case weights	\$24.50	11012	Strip Loin B/O, 12# avg. (Pel Freez)	\$14.15	
65029	Thigh Tips Trimmed, call for case weights	\$17.45	11005	Hind Legs B/I, 12# avg. (Pel Freez)	\$9.35	
65012	Steaks 8oz, 10# cse	\$18.25	11002	Domestic Cut Ups, 15# avg. (Pel Freez)	\$7.30	
65010	Steaks 4-6oz, 10# cse	\$18.25	11001	Bones, 30# avg. (Pel Freez)	\$1.70	
65002	Ground, 4/2.5# cse *Ltd Inventory*	\$13.95				
65006	Patties 2-1 Round, 10# cse *Ltd Inventory*	\$13.95				

Case weights vary, please order by weight

ALLIGATOR - DOMESTIC

10004	Tenderloin, 8/5# avg.	\$11.50
10013	Sirloin, 12/1# avg. cse	\$11.50
10002	Sirloin, 8/5# avg.	\$11.25
10005	Leg & Body (trim), 8/5# cse	\$8.25
10001	Ribs, 45# avg. cse	\$6.45
10006	Whole Alligator *call to specify weight*	\$4.75

Please call ahead for inventory levels

CAMEL - AUSTRALIAN

80001	Trim, Boneless, 44# avg. cse	\$5.35
80091	Ground, 10/1# cse	\$7.25
80003	Striploin, 49# avg cse	\$6.49
80004	Ribeye, 48# avg cse	\$7.15
80002	Tenderloin, 60# avg cse	\$7.85

Please call ahead for inventory levels

FROG

93001	Frog Legs 6-8 (sets/lb), 6/5# cse	\$3.49
93000	Frog Legs 4-6 (sets/lb), 6/5# cse	\$2.95
93002	Frog Legs 2-4 (sets/lb), 6/5# cse	\$2.90

TURTLE

13002	Boneless, 10/5# cse	\$15.80
-------	---------------------	---------



DOMESTIC RABBIT HIND LEG

Pel Freez Domestic Rabbit Hind Leg | Item 11005

Code	Item	FZN	Code	Item	FZN
------	------	-----	------	------	-----

SAUSAGES BISON

71014	B/L Maple Breakfast 8-1, 14/14oz	\$5.95
71016	B/L Southwestern 4-1, 10/1#	MKT
71026	C/R Smk w/Red Wine 5-1, 12/12oz	\$5.85
71027	C/R w/Chipotle Chilies 5-1, 12/12oz	\$6.05

SAUSAGES CHICKEN

71023	B/L Jalapeno 4-1, 10/1#	\$5.35
71024	Smk With Apple 5-1, 12/1#	\$4.65
71021	Habanero & Tequila 5-1 12/1#	\$4.00
71017	Apple Breakfast 10-1, 10/1#	\$4.50
71020	C/R Basil & Sun-Dried Tom 5-1, 12/12oz	\$5.35
71028	C/R w/Apple & Cran 5-1, 12/12oz	\$5.70

SAUSAGES DUCK

71038	B/L Duck w/Bacon 4-1, 10/1#	\$6.40
71036	C/R Smk w/Apple Brandy 5-1, 12/12oz, 9#	\$5.95
71161	C/R Smk w/Apple Brandy 6 inch, 3.6, 9/1#	\$6.10
71030	C/R w/Orange 5-1, 12/12oz, 9#	\$5.50
71029	C/R Duck with Foie Gras 5-1, 12/12oz, 9#	\$5.95

SAUSAGES ELK AND VENISON

71031	C/R Elk w/Madera Wine 5-1, 12/12oz, 9#	\$5.70
71160	C/R Elk w/Apple, Pear, Port Wine 5-1, 12/12oz, 9#	\$5.70
71054	C/R Venison 5-1, 12/12oz, 9#	\$5.25
71056	C/R Smk Venison w/Port Wine 5-1, 12/12oz, 9#	\$5.50
71037	C/R Venison & B/Berry 5-1, 12/12oz, 9#	\$5.45
71159	C/R Venison w/Red Wine/Demi Glace, 12/12oz, 9#	\$5.45
71226	B/L Venison w/ Pork 5-1, 10/1#	\$4.99

SAUSAGES LAMB

71042	B/L Lamb w/Apple & Garlic 4-1, 10/1#	\$6.15
71043	B/L Italian 4-1, 10/1#	\$5.95
71032	C/R Merguez 5-1, 12/12oz, 9#	\$6.00
71163	C/R w/Oregano, Garlic, White Wine 6 in, 3.6oz, 9#	\$6.35

SAUSAGES PHEASANT

71047	B/L Pheasant Bratwurst 4-1, 10/1#	\$9.45
71034	C/R w/Cognac 5-1, 12/12oz, 9#	\$6.00
71048	B/L Smoked Pheasant Sausage 4-1, 10#	\$9.75

SAUSAGES PORK

71051	B/L British Bangers 8-1, 10/1#	\$5.10
71050	C/R Pork Andouille 5-1, 12/12oz, 9#	\$4.45



Venison Sausage

with Pork

5-1

Item 71226



SAUSAGES OSTRICH

71046	B/L Smk w/Pistachios 4-1, 10/1#	\$15.65
-------	---------------------------------	---------

SAUSAGES WILD BOAR

71002	C/R Bratwurst 5-1, 12/12oz, 9#	\$5.00
71025	C/R w/Cranberries 5-1, 12/12oz, 9#	\$5.35
71158	C/R w/Garlic & Marsala 5-1, 12/12oz, 9#	\$5.45
71003	Andouille 4-1, 12/1#	\$5.00
71005	C/R Italian 4-1, 12/1#	\$5.00
71113	B/L Smk Bratwurst 4-1, 10/1#	\$5.75
71114	B/L Smk Hot Link 4-1, 10/1#	\$5.75
71115	B/L Smk Cheddar Jalapenowurst 4-1, 10/1#	\$6.00
71157	C/R Wild Boar with Three Chilis 5-1, 12/12oz, 9#	\$5.35

OTHER SPECIALTY SAUSAGES

71103	B/L Smk Alligator Andouille 4-1, 10/1#	MKT
71073	Smk Turkey Maple B/Fast 8-1, 5#	\$5.65
71035	C/R Rabbit with White Wine 5-1, 12/12oz	\$5.95
71044	Smk Linguica 3-1, 5#	\$3.35

Code	Item	FZN	Code	Item	FZN	CHD
FABRIQUE DELICES SAUSAGES			SMOKED PRODUCTS			
71079	Duck w/Figs 4-1, 10/1#	\$8.90	62018	B/L Chicken Whole, 12/2¼-2½#	\$3.75	
71010	Boudin Noir (Blood) 4-1, 10/1#	\$8.80	62019	B/L Chicken Whole, 12/3#+	\$3.75	
71009	Boudin Blanc 4-1, 10/1#	\$7.65	62017	B/L Chicken Breast, 2/8x10-12oz	\$5.60	\$5.60
71135	Saucisson a l'ail, (Pork) Garlic large, 12/1½#	\$7.50	64038	B/L Duck Breast, 24-28oz, 12# avg.	\$14.25	
71070	Chicken Merguez 8-1, 12/12oz	\$6.50	64039	B/L Duck Prosciutto, 12-16oz, 10# avg.	\$16.25	
HOT DOGS			31027	Wild Boar Leg, B/O, S/Off, 10# avg.	\$9.95	
71111	Grass Fed Beef, All Nat. 7-1, 2/5#	\$4.25	32006	B/L Ham Tasso, 10# avg.	\$4.95	\$4.95
24079	Bison 5-1 RETL, 6/8pc, 1.6#pk	\$41.10	34003	Ham Virginia Sliced, 8/12oz	\$12.45	
71012	Bison 5-1 6 inch, 2/5#	\$5.50	34209	Berkshire Ham B/O, Cooked Halves, 4/7.5#	\$4.95	\$4.95
58968	Wagyu Beef 2-1, approx 12 inch, 2/5#	\$4.00	34208	Hickory Berkshire Ham B/I, S/Off, 2/15#	\$3.70	
58964	Wagyu Beef 3-1, 8 inch, 2/5#	\$3.75	34028	Ham Virginia, 2/15-17# (Cured, uncooked)		\$3.20
58984	Wagyu Beef 5-1 RETL, 6/8pc, 1.6#pk	\$36.00				
58990	Wagyu Beef 5-1 6 inch, 2/5#	\$3.75				
58911	Wagyu Beef 8-1, 2/5#	\$4.00				
57960	Wagyu Beef 16-1, 2/5#	\$4.25				
58960	Wagyu Beef 32-1, 10/1#	\$4.25				
48977	Venison 7-1 RETL, 6/10pc, 1.4#pk	\$43.20				
20017	G/N Premium Beef 3-1, 8 inch, 2/5#	\$3.25				
SAUSAGE MAKERS SECTION						
64006	Moulard Duck Meat, #40 avg. (Trim)	\$5.70				
87042	Elk Trim, 60# avg.	\$3.30				
14044	NZ Lamb Trim, 41# avg.	\$3.00				
15050	AUST Lamb Trim, 60# avg.	\$3.75				
68309	Pheasant Thigh Meat B/O, 4/5# avg. (Trim)	\$7.95				
97001	Venison "B" Trim, 60# avg.	\$3.10				
97009	Venison "C" Trim, 60# avg.	\$2.65				
31023	Wild Boar Trim, 44# avg.	\$3.45				
55641	Wagyu Beef Trim 75% C/L, 60# avg.	\$2.95				
55644	Wagyu Beef Trim 65% C/L, 60# avg.	\$2.26				
55645	Wagyu Beef Trim 50% C/L, 60# avg.	\$1.70				
20320	Grass Fed Beef Trim 65% CL 60# All Nat.	\$2.25				
20322	Grass Fed Beef Trim 85% CL 60# All Nat.	\$2.96				
AUSTRALIAN WAGYU MEATBALLS						
58799	B/L Wagyu Beef Italian Meat balls (cooked), 2oz, 2x5#	\$4.65				



BROADLEAF HICKORY SMOKED DUCK BREAST



Smoked Duck Breasts, 2/8, 24-28oz | Item 64038

Code	Item	FZN	CHD
NEW ENGLAND CHARCUTERIE			
87000	New England Charcuterie Chorizo Seco		\$18.65
87001	New England Charcuterie Finocchiona		\$17.40
87002	New England Charcuterie Genoa		\$17.40
87003	New England Charcuterie Hot Sopressata		\$19.90
87004	New England Charcuterie Loukaniko		\$17.40
87005	New England Charcuterie Saucisson Sec		\$18.65
87006	New England Charcuterie Sobresada		\$18.65
87007	New England Charcuterie Sriracha		\$19.90

Code	Item	FZN	CHD
ANGEL'S SALUMI			
67103	Angel's Salami Venison & Berkshire Pork, 6 x 6oz		\$16.85
67104	Angel's Salami Black Truffle Le Perigord, 6 x 7oz		\$16.60
67107	Angel's Salami Duck, 6 x 6oz		\$18.35
31060	Angel's Salami Wild Boar 6 x 7oz		\$18.60
34102	Angel's Duck Prosciutto, 15/12oz		\$22.35
34103	Angel's Wild Boar Prosciutto, 2/2.5#		\$24.44

Code	Item	FZN	CHD
FABRIQUE DELICES			
71121	Fabrique Delices' Saucisson Sec (French Style Dry), 8/10-12oz		\$14.40
71122	Fabrique Delices' Chorizo d'España (Spanish Style Dry), 10/1#		\$12.70

Code	Item	FZN	CHD
TRADITIONAL PATES, MOUSSES			
67012	Goose Supreme w/Sauternes-Pork Free, 2/3½#	\$19.20	\$19.20
67013	Pheasant Terrine w/Figs & Pistachios, 2/3½#	\$11.95	\$11.95
67005	Duck Galantine w/Truffles and Pistachios, 2/5#	\$10.20	\$10.20
67021	Truffle Mousse, 2/3½#	\$10.70	\$10.70
67014	Rabbit w/Prunes & Cognac, 2/3½#	\$13.20	\$13.20
67018	Venison w/Apricots & Hazelnuts, 2/3½#	\$9.60	\$9.60
67006	Duck w/Port Wine-Pork Free, 2/3½#	\$9.85	\$9.85
67002	De Campagne w/Black Pepper, 2/3½#	\$7.20	\$7.20

Code	Item	FZN	CHD
GOAT			
17005	Whole, skin-off, under 26#	\$4.00	
17031	6 Way cut up	\$4.75	
17011	Cubes, B/I, 15#	\$4.65	
17002	Legs, B/I, 6/7#	\$4.85	
17040	Ground, 4 x 2.5#	\$5.90	

NEW ENGLAND CHARCUTERIE

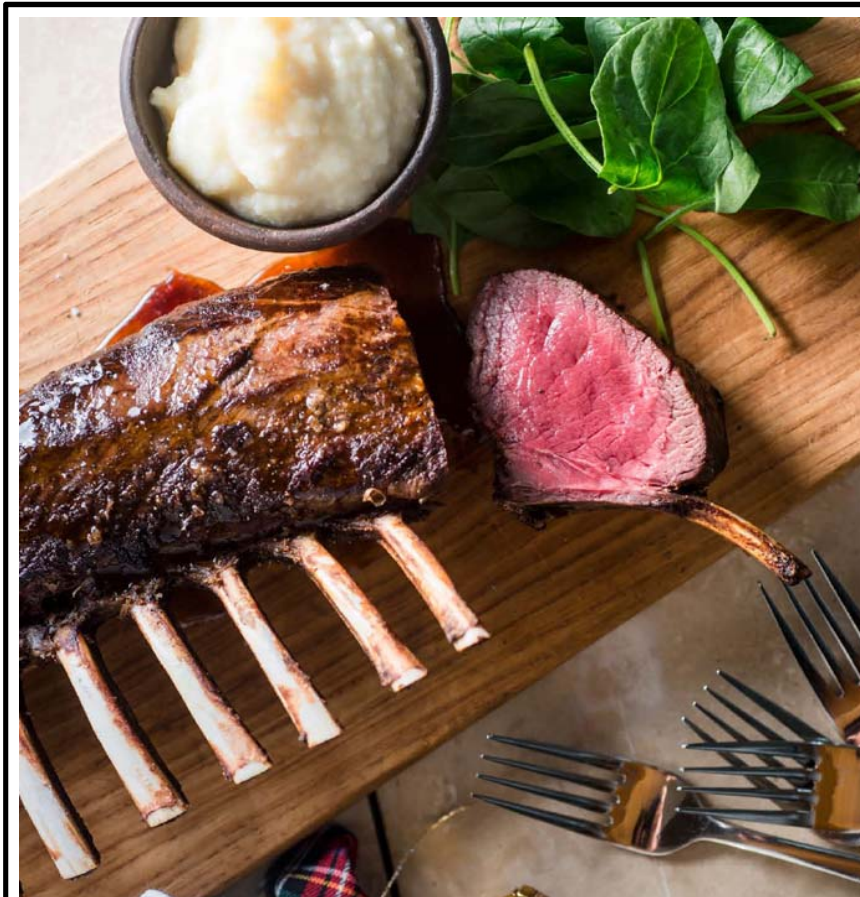


Fifteen years of experience and a passion for charcuterie is infused in every product painstakingly created by Master Artisan and Meat Smith Joshua Smith at New England Charcuterie.

Finocchiona | Item 87001 Loukaniko | Item 87004 Genoa | Item 87002

Code	Item	FZN	CHD
FOIE GRAS FOB LA			
92001	Duck Foie Gras A Hudson	\$29.95	\$37.50
92002	Duck Foie Gras B Hudson	\$27.40	\$33.15
92003	Duck Foie Gras C Hudson	\$17.50	\$25.35
92004	Duck Foie Gras A Sliced	\$33.75	
92016	Duck Foie Gras Hudson Cubes	\$19.15	\$28.75
92017	Duck Foie Gras Hudson Terrine		\$61.90
92024	Duck Foie Gras Hudson Torchon		\$59.40
92027	Canadian Deveined Foie Gras		\$33.50
FOIE GRAS DROP SHIP NY			
92101	Duck Foie Gras A Hudson	\$26.50	\$34.15
92104	Duck Foie Gras A, 2oz Sliced Hudson	\$30.00	
92102	Duck Foie Gras B Hudson	\$24.15	\$29.45
92103	Duck Foie Gras C Hudson	\$15.00	\$22.65
92106	Duck Foie Gras Cubes	\$16.75	

Code	Item	FZN	CHD	Code	Item	FZN	CHD
BROADLEAF CERVENA VENISON FROM PAMU FARMS				BROADLEAF CERVENA ELK FROM PAMU FARMS			
44100	Saddle B/I 3/14# down	\$9.45	\$9.45	44120	Saddle B/I Half Saddle	\$10.45	\$10.45
44101	Saddle B/I, 3/14# up	\$9.45	\$9.45	44121	Shortloin Saddle B/I, 3/10# avg.	\$10.45	\$10.45
44102	Strip Loin Full TTS, 12/4½-5½#	\$15.95	\$15.95	44122	Frenched 8 Rib Rack, 8/2½-3#	\$17.45	\$17.45
44103	Tenderloin, 10/2pk, 12# avg.	\$19.95	\$19.95	44123	Frenched 2 Rib Rack, 20/2pk, 1#pk	\$10.05	\$10.05
44104	NY Strip Loin, TTS, 8-10/1½-2#	\$16.95	\$16.95	44124	Strip Loin Full TTS, 9/4-5#	\$17.45	\$17.45
44105	Frenched 8 Rib Rack, 10/2-2½#	\$16.45	\$16.45	44125	NY Strip Loin, DND, 8/1½-2#	\$20.95	\$20.95
44106	Frenched 2 Rib Rack, 20/2pk, 1#pk	\$9.00	\$9.00	44126	Tenderloin, 5/2pk, 13# avg.	\$21.95	\$21.95
44107	Leg B/I, 2/20# avg.	\$5.75	\$5.75	44127	Denver Leg B/O, 2/5# avg.	\$11.25	\$11.25
44108	Leg B/I Femur Only	\$7.45	\$7.45	44128	Denver Leg Portion B/O, 10# avg.	\$11.25	\$11.25
44109	Denver Leg B/O, 2/5#	\$11.95					
44110	Denver Leg Portion B/O, 10# avg.	\$10.45					



Broadleaf Cervena Venison from Pamu Farms 8 bone Rib Rack | Item 44105

Rugged natural
 landscapes give our
 naturally raised deer
 freedom to roam and take
 advantage of the native
 vegetation. From flat rolling
 hills to steep
 tussock gullies, our
 venison reflects
 our passion for our
 craft.



Code	Item	FZN	CHD	Code	Item	FZN	CHD
------	------	-----	-----	------	------	-----	-----

NEW ZEALAND RED DEER (CONTINUED)



85142	Bottom Round Cap On, 41# avg.					\$7.75	
85141	Inside Round Cap On, 42# avg.					\$7.75	
48952	Leg B/O Shank On, 43# avg.					\$5.75	
96077	Shoulder B/O Shank Off, 45# avg.					\$4.95	
96046	Shoulder B/O BRN, approx 6/4#+					\$6.35	
96078	Shoulder B/O BRN, approx 6-10/pc, 2#+					\$6.55	
45051	Bones, 26# avg.					\$0.99	
48988	Medallions 4oz, 10#					\$15.85	
48987	Medallions 6oz, 10#					\$15.85	
48986	Medallions 8oz, 10#					\$15.85	
48994	Loin Chops B/I 10-12oz					\$16.45	
48996	Rib Chops B/I 8-10oz					\$11.95	
48933	Osso Bucco Hind Shank 3 inch, 10#					\$5.75	
48984	Osso Bucco Fore Shank 3 inch, 10#					\$4.55	
87083	Venison Brisket, 53# avg.					\$6.99	
96079	Venison Shoulder B/O, shank on, 44# avg.					\$3.95	
47043	Venison Short Ribs, B/I, 10# avg.					\$5.35	\$5.35
99049	Venison Sweetbreads					\$7.50	
48992	Ground Consommé (Chili grind) 2/5#					\$4.35	
48990	Ground, 4/2.5#					\$4.20	
48991	Ground, 10/1#					\$4.40	
48982	Patties 2-1 Round, 10#					\$4.20	
48981	Patties 3-1 Round, 10#					\$4.20	
48980	Patties 4-1 Round, 10#					\$4.20	
48978	Stew Meat (Diced), 2/5#					\$5.40	
48979	Stew Meat (Diced), 10/1#					\$5.60	
82010	Venison Livers					\$3.95	

NEW ZEALAND FALLOW DEER

42078	Saddle B/I, 6/7# avg.					\$7.95	
44092	Leg B/I, 3/6.5# avg.					\$3.50	

RETAIL VENISON PRODUCTS

48948	Medallions Boxed, 6/3x4oz					\$78.00	
48943	Stir-Fry Boxed, 6/1#					\$53.70	
48900	Venison Ground, 10/1#					\$4.85	
48945	Ground Boxed, 6/1#					\$30.00	
48940	Patties Boxed, 6/4x4oz					\$30.00	
48972	Jerky Black Pepper, 2oz						\$4.65
48970	Jerky Black Pepper, 4oz						\$9.15

BROADLEAF CERVENA VENISON

42002	Saddle B/I, 3/14# down	\$9.45	\$9.45				
42003	Saddle B/I, 3/14# up	\$9.45	\$9.45				
43064	Tenderloin, 10/2pk, 12# avg.		\$19.95				
42126	NY Strip Loin, TTS, 8-10/1½-2#		\$16.95				
43016	Strip Loin Full TTS, 12/4½-5½#		\$15.95				
42086	Frenched 8 Rib Rack, 10/2-2½#		\$16.45				
42026	Frenched 2 Rib Rack, 20/2pk, 1#pk		\$9.00				
45034	Denver Leg B/O, 2/5#	\$11.25	\$11.95				
45013	Denver Leg Portion B/O, 10# avg.	\$10.25	\$10.45				
44011	Leg B/I, 2/20# avg.		\$5.75				
48998	4-6 oz Venison Rib Chops	\$11.95	\$11.95				

NEW ZEALAND RED DEER

93049	Strip Loin Full TTS, 24# avg.	\$14.95					
51002	Flank Steaks, 13# avg.	\$8.25					
81011	BC Flank Steaks, 15-50#cs (call to verify)	\$7.95					
86102	Shoulder Jerky Steaks, 48# avg.	\$7.76					
85143	Knuckle Cap On, 36# avg.	\$7.50					

All Prices Listed are FOB Los Angeles and are Subject to Change at Any Time

Code	Item	FZN	CHD	Code	Item	FZN
BROADLEAF CERVENA ELK / WAPITI X						
42007	Saddle B/I (Split), 2/20# avg.	\$10.45				
43025	Tenderloin, 5/2pk, 13# avg.		\$21.95			
43017	NY Strip Loin, DND, 8/1½-2#		\$20.95			
43056	Strip Loin Full TTS, 9/4-5#	\$16.95	\$17.45			
42052	Frenched 8 Rib Rack, 8/2½-3#		\$17.45			
42027	Frenched 2 Rib Rack, 20/2pk, 1#pk		\$10.05			
42165	Shortloin Saddle B/I, 3/10# avg.	\$10.45				
45028	Denver Leg B/O, 2/5# avg.	\$11.45	\$11.95			
45068	Denver Leg Portion B/O, 10# avg.		\$11.25			
BROADLEAF ELK / WAPITI X						
41002	Flank Steaks, 15# avg.	\$8.25				
81012	BC Flank Steaks, 15-50#cs (call to verify)	\$7.95				
86104	Shoulder Jerky Steaks, 48# avg.	\$7.76				
85163	Knuckle Cap On, 40# avg.	\$7.95				
85162	Bottom Round Cap On, 41# avg.	\$7.95				
85161	Inside Round Cap On, 42# avg.	\$7.95				
45069	Leg B/O Shank On, 40# avg.	\$6.85				
96047	Shoulder B/O BRN, 42# avg.	\$6.55				
87042	Trim, 56# avg.	\$3.30				
49991	Medallions 4oz, 10#	\$17.45				
49990	Medallions 6oz, 10#	\$17.45				
49989	Medallions 8oz, 10#	\$17.45				
49995	Loin Chops B/I 8-10oz	\$16.80				
49998	Loin Chops B/I 10-12oz	\$16.80				
49962	Oso Bucco Hind Shank 2 inch, 10#	\$5.99				
49965	Ground Consommé (Chili grind) 2/5#	\$4.50				
49993	Ground, 4/2.5#	\$4.35				
49994	Ground, 10/1#	\$4.55				
49988	Patties 2-1 Round, 10#	\$4.35				
49987	Patties 3-1 Round, 10#	\$4.35				
49986	Patties 4-1 Round, 10#	\$4.35				
49984	Stew Meat (Diced), 2/5#	\$5.50				
49983	Stew Meat (Diced), 10/1#	\$5.70				
RETAIL ELK PRODUCTS						
49981	Jerky Black Pepper, 2oz		\$4.65			
49979	Jerky Black Pepper, 4oz		\$9.15			
49900	Elk Ground, 10/1#	\$5.00				
49961	Elk Ground w/Beef, 10/1#	\$4.80				



New Zealand Farm Raised Elk.

All natural, grass fed, and humanely raised.

New Zealand farm raised and grass fed Elk give a hint of rustic elegance to any menu. Rich yet subtle in flavor, these fabulous menu items range from frenched rib racks for center of plate presentation to portion controlled chops and medallions and ground items for out-of-the box burger plates.

*suggested serving

Elk Denver Leg | Item 43028

Code	Item	FZN	CHD	Code	Item	FZN
------	------	-----	-----	------	------	-----

*****UNLESS NOTED OTHERWISE, ALL PRICES ON THIS PAGE ARE PER POUND*****

BROADLEAF RETAIL GROUND, PATTIES & HOT DOGS

55563	G/N Wagyu Beef Patties 3-1 Round 12/4 pc	\$6.38
55568	G/N Wagyu Beef Patties 8-1 Round, 12/12pc	\$7.23
20100	Brunette Downs Grass Fed Ground Beef 10/1#	\$4.00
24000	Bison Ground, 10/1#	\$8.85
24085	Bison Patties 4-1 Round, 6/4x4oz	\$9.05
48945	Venison Ground, 6/1#	\$5.00
48900	Venison Ground, 10/1#	\$4.85
48940	Venison Ground Patties 6/4x4oz	\$5.00
49900	Elk Ground Boxed, 10/1#	\$5.00
31000	Wild Boar Ground, 10/1#	\$5.00
55564	G/N Signature Hot Dog (Skinless) 4-1, 12/4 pc	\$4.87
58984	Wagyu Beef Hot Dog 5-1, 6/8pc (1.6#pk)	\$6.00
24079	Bison Hot Dogs 6 inch 5-1, 6/8pk	\$6.85
48977	Venison Hot Dog 7-1, 6/10pc (1.4#pk)	\$7.20

BROADLEAF RETAIL STEAKS

24082	Bison Ribeye Stks Boxed, 6/2x5oz, price per pack	\$16.50
24080	Bison NY Strip Stks Boxed, 6/2x7oz, price per pack	\$17.00
24077	Bison Top Sirloin Stks, Boxed, 6/2x8oz, price per pack	\$19.00
48948	Venison Medallions Boxed, 6/3x4oz, price per pack	\$13.00
48943	Stir-Fry Boxed, 6/1#, price per pack	\$8.95

BROADLEAF RETAIL POULTRY

64035	Muscovy Duck Drake breast, 10pc	\$12.30
61031	Quail Jumbo Whole RETL (10/4 pk) (TXQ)	\$86.95

BROADLEAF RETAIL JERKY

24081	Bison Jerky, Black Pepper, 2oz, price per pack	\$3.75
24083	Bison Jerky, Black Pepper, 4oz, price per pack	\$7.40
48972	Venison Jerky, Black Pepper, 2oz, price per pack	\$4.65
48970	Venison Jerky, Black Pepper, 4oz, price per pack	\$9.15
49981	Elk Jerky, Black Pepper, 2oz, price per pack	\$4.65
49979	Elk Jerky, Black Pepper, 4oz, price per pack	\$9.15

CURED

57256	Wagyu Beef Bresaola, Sliced, 4oz, price per pack	\$4.50
30016	Wild Boar Sliced Bacon, 10/1#	\$5.99
57350	Raw Wagyu Corned Brisket, 6 pc, 30# avg case	\$4.95

PLANTATION RETAIL QUAIL PRODUCTS

61034	Whole Quail, 4pc pk, 9/18oz cse	\$6.15
61035	Marinated Quail Brst, 6 pc pk, 9/8oz cse	\$7.75
61036	Quail Brst w/Jalapeno & Bacon, 6 pc pk, 9/8oz cse	\$7.90



Plantation Retail Quail Breast with Jalapeno & Bacon, 6 pc pk

MAPLE LEAF FARMS RETAIL DUCK PRODUCTS

64060	Southwest B/O Duck Brst 9/7.5oz cse	\$56.50
64034	Honey Orange B/O Duck Brst 9/7.5oz cse	\$56.50
64061	Roasted Garlic B/O Duck Breast 9/7.5oz cse	\$56.50

CHATEAU ROYALE RETAIL SAUSAGE

71150	Chicken Apple Sausage 5-1, 12/12oz	\$5.50
71151	Bison Chipotle Sausage 5-1, 12/12oz	\$6.15
71152	Pheasant Cognac Sausage 5-1, 12/12oz	\$5.95
71153	Venison Merlot Sausage 5-1, 12/12oz	\$5.75
71154	Wild Boar Cranberry Sausage 5-1, 12/12oz	\$5.75

CHATEAU ROYALE COOKED RETAIL SAUSAGE

71170	Bison w/Chipotle Chilies Sausage 5-1, 8/12oz	\$7.95
71171	Wild Boar w/Cranberries, Shiraz Sausage 5-1, 8/12oz	\$6.25
71172	Wild Boar w/Tequila, Lime, Jalapeno Sausage 5-1, 8/12oz	\$6.25
71173	Venison w/Merlot, Blueberries Sausage 5-1, 8/12oz	\$6.25
71174	Rabbit w/Swiss Cheese, White Wine Sausage 5-1, 8/12oz	\$6.25

<i>Dot Code #</i>	<i>Item</i>	<i>B/L Code #</i>	<i>Delivered Fzn Price</i>	<i>Dot Code #</i>	<i>Item</i>	<i>B/L Code #</i>	<i>Delivered Price</i>
AUSTRALIAN DARLING DOWNS WAGYU BEEF							
550451	Strip Loin (3), B/O 1 Rib, 3 pc, 37# avg.	51433	\$12.55				
548923	Strip Loin (4), B/O 1 Rib, 3 pc, 37# avg.	51434	\$15.10				
556565	Tenderloin (3), 190, 5 pc, 28#	51534	\$17.30				
636445	Tenderloin (4), 190, 5 pc, 28#	51544	\$22.30				
AUSTRALIAN WAGYU BEEF							
548935	Ground, 4/2½#	58999	\$4.00				
548936	Patties 10oz Round, 10#	58970	\$4.00				
548937	Patties 2-1 Round, 10#	58992	\$4.00				
548938	Patties 8-1 Round, bulk pack, 10#	58902	\$4.65				
538903	Wagyu Beef 2-1, approx 12 inch, 2/5#	58968	\$4.35				
548926	Wagyu Beef Hot Dog 5-1 6 inch, 2/5#	58990	\$4.10				
548924	Wagyu Beef Hot Dog 32-1, 10/1#	58960	\$4.60				
BRUNETTE DOWNS GRASS FED BEEF							
548931	Ground, 4/2½#	20142	\$3.54				
548930	Patties 2-1 Round, 10#	20143	\$3.69				
550530	Patties 3-1 Round, 10#	20144					
550538	Patties 4-1 Round, 10#	20145					
BISON							
623844	NY Strip Stks 10oz, 10#	24028	\$19.15				
550524	Ground, 4/21/2#	24025	\$8.65				
548934	Patties 2-1 Round, 10#	24034	\$8.65	548922	Ham Tasso, 10#	32006	\$4.85
548933	Patties 3-1 Round, 10#	24037	\$8.65	567059	Wild Boar Sliced Bacon (retail w/labels), 10/1#	30016	\$6.34
548929	w/Beef Ground 4/2½#	24026	\$7.85	SPECIALTY SAUSAGES			
548939	w/Beef Patties 2-1 Round, 10#	24134	\$7.85	565703	Wild Boar w/Cranberries 5-1, 12/12oz	71025	\$5.70
550527	w/Beef Patties 3-1 Round, 10#	24043	\$7.85	553002	Venison & B/Berry 5-1, 12/12oz	71037	\$5.80
WILD BOAR							
548928	Ground, 2/5#	31008	\$5.00	550516	Lamb w/Apple & Garlic 4-1, 10/1#	71042	\$6.50
NEW ZEALAND LAMB							
550431	NZ Loins B/O 6-8oz	14560	\$12.30	564449	Duck Smk w/Apple Brandy 5-1, 12/12oz	71036	\$6.30
548917	NZ Loins B/O 8-10oz	14561	\$12.30	550515	Duck w/Bacon 4-1, 10/1#	71038	\$6.75
548918	NZ 7-8 rib Frnchd 14-16oz Racks (TK) 14/2pk	14577	\$8.10	581065	Elk w/Apple, Pear, Port Wine 5-1, 12/12oz	71160	\$6.05
548919	NZ 7-8 rib Frnchd 16-18oz Racks (TK) 14/2pk	14578	\$8.10	624932	B/L Smk Cheddar Jalapenowurst 4-1, 10/1#	71115	\$6.35
548932	NZ Legs, EZ Carve, B/I (TK), 6/3.5-5 lb	14527	\$3.95	550519	C/R Venison 5-1, 12/12oz, 9#	71054	\$5.60
548914	NZ Hind Shanks (TK) 16-18oz, 28# Avg.	14557	\$3.70	613073	C/R Pork Andouille 5-1, 12/12oz, 9#	71050	\$4.80
550430	NZ Fore Shanks (TK) 16oz+, 25# Avg.	14558	\$3.60	NEW ZEALAND VENISON			
				550528	Ground, 4/2.5#	48990	\$4.55
				550540	Patties 3-1 Round, 10#	48981	\$4.55



Looking to save on transportation costs?

Broadleaf has partnered with Dot to offer an alternate distribution channel at nationally delivered pricing.

Dot has been delivering supply chain solutions to the food industry since 1960, providing distributors with an efficient distribution system with as little as a one case product line minimums and short lead times.

Listed are the exclusive stocked Broadleaf items and their delivered pricing that are now available. All Broadleaf items are available through Dot, subject to additional lead time and availability.

Please call Dot directly at 1.800.366.3687....or contact your Dot sales professional for additional information.



WAGYU BEEF
FLANK STEAK,
BMS 3

EXCEPTIONAL
BEEF AT
AN
EXCEPTIONAL
PRICE.





GIVE YOUR CUSTOMERS THE LUXURY OF WAGYU BEEF
FOR LESS THAN YOU'D EXPECT.

WAGYU BEEF CENTER CUT 12 OZ
NY STRIP STEAKS, BMS 3
ITEM 58988

